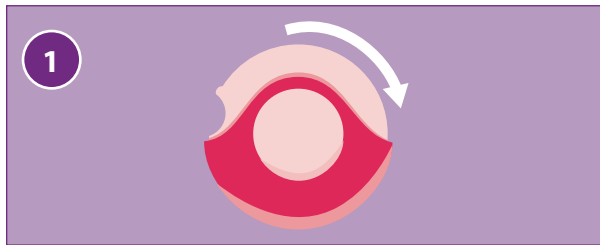
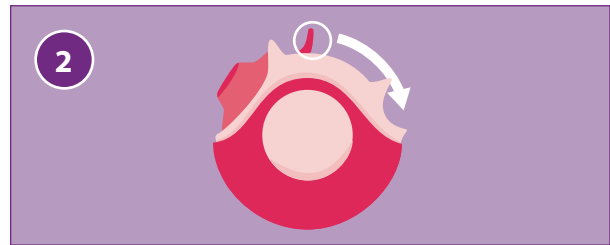


## INSTRUCTIONS FOR USING A DRY POWDER INHALER

A dry powder inhaler (DPI) delivers asthma medication through an extremely fine powder that can be inhaled with a deep, strong breath.



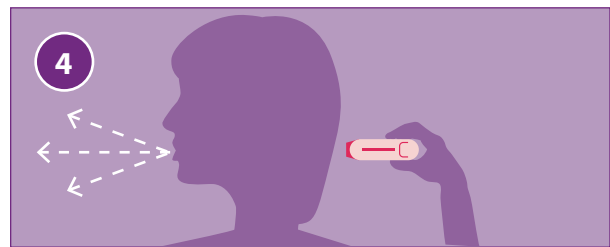
**STEP 1:** Open the inhaler mouthpiece or remove the cap from the inhaler.



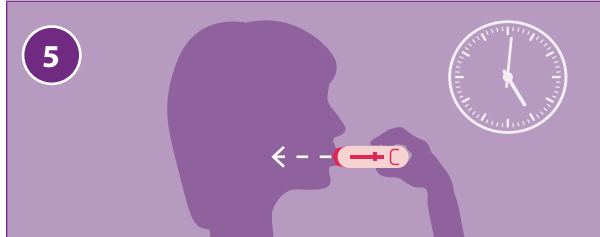
**STEP 2:** Load a dose of medicine into the inhaler by pulling back the lever.



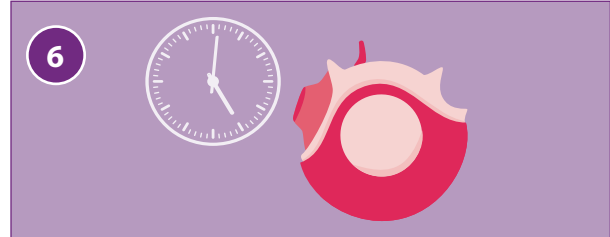
**STEP 3:** Stand or sit up straight. Hold the inhaler so the mouthpiece is horizontal to your mouth. **DO NOT** shake the inhaler.



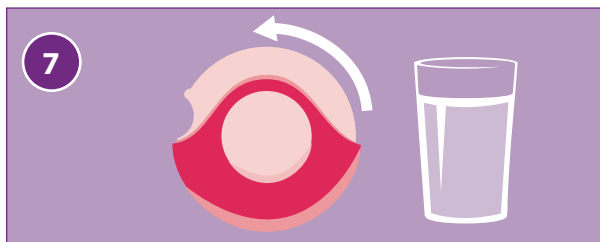
**STEP 4:** Turn your head away from the DPI. Take in a deep breath and blow it out. **DO NOT** blow (exhale) into the inhaler.



**STEP 5:** Place the mouthpiece of the inhaler between your lips and close your lips around it to form a tight seal. Take a **DEEP, QUICK BREATH** in through your mouth. Hold your breath and count to 10. If you cannot hold your breath for 10 seconds, hold your breath for as long as you can. Take the inhaler out of your mouth and breathe out slowly away from the inhaler.



**STEP 6:** If you need to take another puff of medicine, wait 1 minute. After 1 minute, repeat steps 2 through 5.



**STEP 7:** Close the DPI to cover the mouthpiece. The dose counter will display the number of doses remaining. Rinse your mouth out with water after you have taken your last puff of medicine. Make sure you spit the water out—**DO NOT SWALLOW IT.**